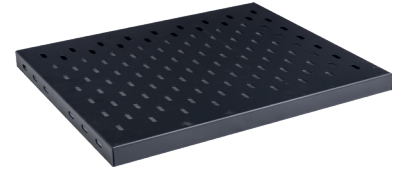


SHELVES

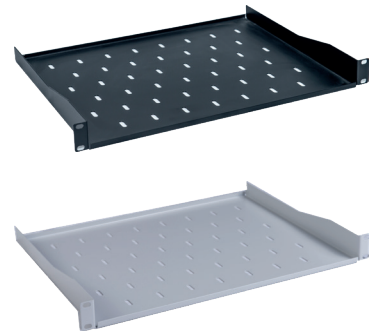
Order Code	Description	Width (mm)	Depth (mm)	Height (mm)	Weight (kg)
ZEY.SR0636	For 19" Fixed Shelf d=600 mm	465	400	30	1,85
ZEY.SR0848	For 19" Fixed Shelf d=800 mm	465	520	30	3,50
ZEY.SR1064	For 19" Fixed Shelf d=1000mm	465	720	30	4,50
ZEY.SR1072	19" 1U Fixed Rack D=720mm (Server Type Heavy Duty)	483	720	44,5	5,00

FIXED SHELVES

Order Code	Description	Width (mm)	Depth (mm)	Height (mm)	Weight (kg)
ZEY.HR060	For 19" Sliding Shelves d= 600 mm	483	400	44,5	3
ZEY.HR080	For 19" Sliding Shelves d= 800 mm	483	520	44,5	4,5
ZEY.HR100	For 19" Sliding Shelves d= 1000 mm	483	720	44,5	5,5

SLIDING SHELVES

Order Code	Description	Width (mm)	Depth (mm)	Height (mm)	Weight (kg)
ZEY.MR1U25-B	19" 1U Modem Rack d=250mm (front-mounted) for Wall Mounted Type	483	250	44,5	1,10
ZEY.MR1U35-B	19" 1U Modem Rack d=350mm (front-mounted) for Wall Mounted Type	483	350	44,5	2,20
ZEY.MR1U40-B	19" 1U Modem Rack d=400mm (front-mounted) for Wall Mounted Type	483	400	44,5	2,40
ZEY.MR1U25-S	19" 1U Modem Rack d=250mm (front-mounted)	483	250	44,5	1,10
ZEY.MR1U35-S	19" 1U Modem Rack d=350mm (front-mounted)	483	350	44,5	2,20
ZEY.MR1U40-S	19" 1U Modem Rack d=400mm (front-mounted)	483	400	44,5	2,40
ZEY.MR2U35-S	19" 2U Modem Rack d=350mm (front-mounted)	483	350	89	2,50
ZEY.MR2U40-S	19" 2U Modem Rack d=400mm (front-mounted)	483	400	89	2,70
ZEY.MR3U35-S	19" 3U Modem Rack d=350mm (front-mounted)	483	350	133,5	2,60

EQUIPMENT SHELVES

COOLING FAN UNITS

Order Code	Description	Width (mm)	Depth (mm)	Height (mm)	Weight (kg)
ZEY.FN01	1 Fan + Thermostat Unit (For wall mounted cabinets)	470	200	45	1,60
ZEY.FN02	2 Fan + Thermostat Unit (For wall mounted cabinets)	470	200	45	2,60
ZEY.FN12	2 Fan + Thermostat Unit (for d=600/800m Standing Cabinets)	430	460	45	3,40
ZEY.FN04	4 Fan + Thermostat Unit (for d=600/800mm Standing Cabinets)	430	460	45	4,30
ZEY.FN22	2 Fan + Thermostat Unit (for d=1000mm Standing Cabinets)	430	660	45	4,30
ZEY.FN14	4 Fan + Thermostat Unit (for d=1000mm Standing Cabinets)	430	660	45	4,90
ZEY.FN06	6 Fan + Thermostat Unit (for d=1000mm Standing Cabinets)	430	660	45	5,80

COOLING FAN UNITS INCLUDED THERMOSTAT



Order Code	Description	Width (mm)	Depth (mm)	Height (mm)	Weight (kg)
ZEY.DFN01	1 Fan + Digital Thermostat Unit (For wall mounted cabinets)	470	200	45	1,60
ZEY.DFN02	2 Fan + Digital Thermostat Unit (For wall mounted cabinets)	470	200	45	2,80
ZEY.DFN12	2 Fan + Digital Thermostat Unit (for d=600/800mm Standing Cabinets)	430	460	45	3,40
ZEY.DFN04	4 Fan + Digital Thermostat Unit (for d=600/800mm Standing Cabinets)	430	460	45	4,30
ZEY.DFN22	2 Fan + Digital Thermostat Unit (for d=1000mm Standing Cabinets)	430	660	45	4,30
ZEY.DFN14	4 Fan + Digital Thermostat Unit (for d=1000mm Standing Cabinets)	430	660	45	4,90
ZEY.DFN06	6 Fan + Digital Thermostat Unit (for d=1000mm Standing Cabinets)	430	660	45	5,80

COOLING FAN UNITS INCLUDED DIGITAL THERMOSTAT



The Fan Size 120*120*38 mm

* Noise Level (Noise dBA) :

43/48

** Air Flow (Air Flow):

m³/ hr ---->138/162
CFM---->82/95

POWER DISTRIBUTION UNITS

Order Code	Description	Weight (kg)
ZEY.PG03	3 Outlet Group Socket 3*1.5 TTR 2 m	0,65
ZEY.PG06	6 Outlet Group Socket 3*1.5 TTR 2 m	0,75
ZEY.PG08	8 Outlet Group Socket 3*1.5 TTR 2 m	0,90
ZEY.PG12	12 Outlet Group Socket 3*1.5 TTR 2 m	1,30

19" ALUMINUM BODY SOCKET GROUPS220V AC, 3x1.5mm², 2m Cable

Order Code	Description	Weight (kg)
ZEY.SPG03	3 Outlet FUSED Group Socket 3*1.5 TTR 2 m	0,90
ZEY.SPG06	6 Outlet FUSED Group Socket 3*1.5 TTR 2 m	0,95
ZEY.SPG09	9 Outlet FUSED Group Socket 3*1.5 TTR 2 m	1,40
ZEY.SPG12	12 Outlet FUSED Group Socket 3*1.5 TTR 2 m	1,55

FUSED 19" ALUMINUM BODY SOCKET GROUPS220V AC, 3x1.5mm², 2m Cable

Order Code	Description	Weight (kg)
ZEY.SPG03-IEC	3 Outlet FUSE Group IEC Socket 3*1.5 TTR 2 m	0,90
ZEY.SPG06-IEC	6 Outlet FUSE Group IEC Socket 3*1.5 TTR 2 m	0,95
ZEY.SPG09-IEC	9 Outlet FUSE Group IEC Socket 3*1.5 TTR 2 m	1,40
ZEY.SPG12-IEC	2 Outlet FUSE Group IEC Socket 3*1.5 TTR 2 m	1,55

FUSED IEC 19" ALUMINUM BODY SOCKET GROUPS220V AC, 3x1.5mm², 2m Cable

Order Code	Description	Weight (kg)
ZEY.SUPG03	3 Outlet FUSED Group UPS Socket 3*1.5 TTR 2 m	0,95
ZEY.SUPG06	6 Outlet FUSED Group UPS Socket 3*1.5 TTR 2 m	1,00
ZEY.SUPG09	9 Outlet FUSED Group UPS Socket 3*1.5 TTR 2 m	1,45
ZEY.SUPG12	12 Outlet FUSED Group UPS Socket 3*1.5 TTR 2 m	1,60

FUSED UPS 19" ALUMINUM BODY SOCKET GROUPS220V AC, 3x1.5mm², 2m Cable

POWER DISTRIBUTION UNITS

Order Code	Description	Weight (kg)
ZEY.SAKP03	3 Outlet Fused Current Protected Group Socket 3*1.5 TTR 2 m	0,95
ZEY.SAKP06	6 Outlet Fused Current Protected Group Socket 3*1.5 TTR 2 m	1,00
ZEY.SAKP09	9 Outlet Fused Current Protected Group Socket 3*1.5 TTR 2 m	1,45
ZEY.SAKP12	12 Outlet Fused Current Protected Group Socket 3*1.5 TTR 2 m	1,60

FUSED CURRENT PROTECTED 19" ALUMINUM BODY SOCKET GROUPS



220V AC, 3x1.5mm², 2m Cable

Order Code	Description	Weight (kg)
ZEY.PPGA3	3-Piece Group, 2m Socket With Socket Switch	0,80
ZEY.PPGA6	6-Piece Group, 2m Socket With Socket Switch	1,00

PVC TYPE SOCKET GROUPS



220V AC, 3x1.5mm², 2m Cable

Order Code	Description
ZEY.SPG12-26U	26U Aluminum Body 12 Outlet FUSE Group Socket 3*1.5 TTR 2 m
ZEY.SPG18-32U	32U Aluminum Body 12 Outlet FUSE Group Socket 3*1.5 TTR 2 m
ZEY.SPG18-36U	36U Aluminum Body 12 Outlet FUSE Group Socket 3*1.5 TTR 2 m
ZEY.SPG18-42U	42U Aluminum Body 12 Outlet FUSE Group Socket 3*1.5 TTR 2 m
ZEY.SPG12-26U-IEC	26U Aluminum Body 12 Outlet FUSED Group Socket 3*1.5 TTR 2 m IEC SOCKET
ZEY.SPG18-32U-IEC	32U Aluminum Body 12 Outlet FUSED Group Socket 3*1.5 TTR 2 m IEC SOCKET
ZEY.SPG18-36U-IEC	36U Aluminum Body 12 Outlet FUSED Group Socket 3*1.5 TTR 2 m IEC SOCKET
ZEY.SPG18-42U-IEC	42U Aluminum Body 12 Outlet FUSED Group Socket 3*1.5 TTR 2 m IEC SOCKET

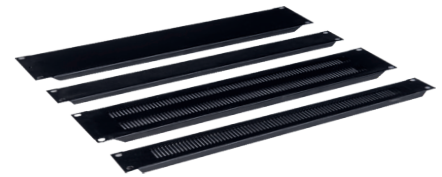
POWER DISTRIBUTION UNIT



BLANKING PANELS

Order Code	Description	Width (mm)	Depth (mm)	Height (mm)	Weight (kg)
ZEY.KAP1U-B	1U Blanking Panel RAL7035	483	15	44,5	0,30
ZEY.KAP2U-B	2U Blanking Panel RAL7035	483	15	89	0,40
ZEY.KAP3U-B	3U Blanking Panel RAL7035	483	15	133	0,60
ZEY.KAP4U-B	4U Blanking Panel RAL7035	483	15	174	0,80
ZEY.PKAP1U-B	1U Kapama Paneli Perforeli RAL7035	483	15	44,5	0,25
ZEY.PKAP2U-B	2U Blanking Panel Perforated RAL7035	483	15	89	0,35
ZEY.PKAP3U-B	3U Blanking Panel Perforated RAL7035	483	15	133	0,55
ZEY.PKAP4U-B	4U Blanking Panel Perforated RAL7035	483	15	174	0,75

Order Code	Description	Width (mm)	Depth (mm)	Height (mm)	Weight (kg)
ZEY.KAP1U-S	1U Blanking Panel RAL9005	483	15	44,5	0,30
ZEY.KAP2U-S	2U Blanking Panel RAL9005	483	15	89	0,40
ZEY.KAP3U-S	3U Blanking Panel RAL9005	483	15	133	0,60
ZEY.KAP4U-S	4U Blanking Panel RAL9005	483	15	174	0,80
ZEY.PKAP1U-S	1U Blanking Panel Perforated RAL9005	483	15	44,5	0,25
ZEY.PKAP2U-S	2U Blanking Panel Perforated RAL9005	483	15	89	0,35
ZEY.PKAP3U-S	3U Blanking Panel Perforated RAL9005	483	15	133	0,55
ZEY.PKAP4U-S	4U Blanking Panel Perforated RAL9005	483	15	174	0,75



CABLE ORGANIZERS

Ürün Kodu	Açıklama	Ağırlık (kg)
ZEY.ORG1U-B	1U 19" Cable Organizer with Metal Holder RAL7035	0,60
ZEY.ORG1U-S	1U 19" Cable Organizer with Metal Holder RAL9005	0,60
ZEY.ORG2U-B	2U 19" Cable Organizer with Metal Holder RAL7035	0,80
ZEY.ORG2U-S	2U 19" Cable Organizer with Metal Holder RAL9005	0,80
ZEY.ORG1UF-B	1U 19" Cable Organizer with Brush RAL7035	0,60
ZEY.ORG1UF-S	1U 19" Cable Organizer with Brush RAL9005	0,60
ZEY.ORG2UF-B	2U 19" Cable Organizer with Brush RAL7035	0,80
ZEY.ORG2UF-S	2U 19" Cable Organizer with Brush RAL9005	0,80
ZEY.ORG1U-SK	1U 19" Cable Organizer with Metal Holder (cover) RAL9005	0,80
ZEY.ORG2U-SK	2U 19" Cable Organizer with Metal Holder (cover) RAL9005	1,00

HORIZONTAL CABLE ORGANIZERS



Order Code	Description	Width (mm)	Depth (mm)	Height (mm)	Weight (kg)
ZEY.ORG26	26U Vertical Organizer (1 set: 2 pieces)	90	90	966	5,00
ZEY.ORG32	32U Vertical Organizer (1 set: 2 pieces)	90	90	1233	6,00
ZEY.ORG36	36U Vertical Organizer (1 set: 2 pieces)	90	90	1411	6,80
ZEY.ORG42	42U Vertical Organizer (1 set: 2 pieces)	90	90	1678	7,20
ZEY.ORG44	44U Vertical Organizer (1 set: 2 pieces)	90	90	1767	7,80
ZEY.ORG47	47U Vertical Organizer (1 set: 2 pieces)	90	90	1900	8,20

VERTICAL CABLE ORGANIZERS



Order Code	Description	Width (mm)	Depth (mm)	Height (mm)	Weight (kg)
ZEY.KK12U	12U Vertical Cable Tray	100	10	537	0,56
ZEY.KK16U	16U Vertical Cable Tray	100	10	715	0,74
ZEY.KK20U	20U Vertical Cable Tray	100	10	893	0,95
ZEY.KK22U	22U Vertical Cable Tray	100	10	982	1,05
ZEY.KK26U	26U Vertical Cable Tray	100	10	1160	1,25
ZEY.KK32U	32U Vertical Cable Tray	100	10	1427	1,52
ZEY.KK36U	36U Vertical Cable Tray	100	10	1605	1,70
ZEY.KK42U	42U Vertical Cable Tray	100	10	1872	2,00
ZEY.KK44U	44U Vertical Cable Tray	100	10	1961	2,10
ZEY.KK47U	47U Vertical Cable Tray	100	10	2094	2,25

VERTICAL CABLE TRAYS METAL



19" MOUNTING VERTICALS FOR FLOOR TYPE CABIN

Order Code	Description	Width (mm)	Depth (mm)	Height (mm)	Weight (kg)
ZEY.D7U	7 U Mounting Verticals (1 Set : 2 Pieces)	25	62,5	344	0,20
ZEY.D9U	9 U Mounting Verticals (1 Set : 2 Pieces)	25	62,5	433	0,40
ZEY.D12U	12U Mounting Verticals (1 Set : 2 Pieces)	25	62,5	537	1,00
ZEY.D16U	16U Mounting Verticals (1 Set : 2 Pieces)	25	62,5	715	1,40
ZEY.D20U	20U Mounting Verticals (1 Set : 2 Pieces)	25	62,5	893	1,75
ZEY.D22U	22U Mounting Verticals (1 Set : 2 Pieces)	25	62,5	982	1,95
ZEY.D26U	26U Mounting Verticals (1 Set : 2 Pieces)	25	62,5	1160	2,30
ZEY.D32U	32U Mounting Verticals (1 Set : 2 Pieces)	25	62,5	1427	2,85
ZEY.D36U	36U Mounting Verticals (1 Set : 2 Pieces)	25	62,5	1605	3,12
ZEY.D42U	42U Mounting Verticals (1 Set : 2 Pieces)	25	62,5	1872	3,68
ZEY.D44U	44U Mounting Verticals (1 Set : 2 Pieces)	25	62,5	1961	3,86
ZEY.D47U	47U Mounting Verticals (1 Set : 2 Pieces)	25	62,5	2095	4,10



EQUIPMENT SUPPORT

Order Code	Description	Width (mm)	Depth (mm)	Height (mm)	Weight (kg)
ZEY.LCD60	L-Type Device Support Equipment for d=600mm Cabinets (1set:2 pieces)	465	397	44,5	0,84
ZEY.LCD80	L-Type Device Support Equipment for d=800mm Cabinets (1set:2 pieces)	465	517	44,5	1,10
ZEY.LCD100	L-Type Device Support Equipment for d=1000mm Cabinets (1set:2 pieces)	465	717	44,5	1,52



19" ELECTRICAL - TELEPHONE DISTRIBUTION MODULE

Order Code	Description	Width (mm)	Depth (mm)	Height (mm)	Weight (kg)
ZEY.3UEDM	3U Electrical Distribution Module	483	125	133,5	1,25
ZEY.3UTDM	3U Telephone Distribution Module	483	125	133,5	1,25



19" DRAWER MODULE

Order Code	Description	Width (mm)	Depth (mm)	Height (mm)	Weight (kg)
ZEY.CEK1U	1U 19" Drawer Module	483	455	44,5	5,50
ZEY.CEK2U	2U 19" Drawer Module	483	455	89	7,35
ZEY.CEK3U	3U 19" Drawer Module	483	455	133,5	9,00


19" HEATER PANEL MODULE

Order Code	Description	Width (mm)	Depth (mm)	Height (mm)	Weight (kg)
ZEY.AIP	1U Heater Panel with Analog Thermostat	483	100	44,5	1,25
ZEY.DIP	1U Heater Panel with Digital Thermostat	483	100	44,5	1,25


LEVELLING FEET, CASTORS & MOUNTING ACCESSORIES

Order Code	Description	Weight (kg)
ZEY.AKS1	Wheel module set - 2 with brakes, 2 without brakes for Standing Type	1,80
ZEY.AKS2	Fixing foot (height adjustable) PINION FOOT	0,25
ZEY.AKS3	M6 Cage Nut Set (20 pcs)	0,19
ZEY.AKS4	Shirt wall mounting set	0,50
ZEY.AKS5	Wheel module set - 2 with brake, 2 without brake for Wall Mounting	0,82
ZEY.AKS6	M6 Cage Nut Set (50 pcs)	0,49
ZEY.AKS8	Grounding Set	0,10


19" LIGHTING MODULES

Order Code	Description	Width (mm)	Depth (mm)	Height (mm)	Weight (kg)
ZEY.AYD1	19" 1U Automatic Lighting Module	483	26,5	44,5	0,20
ZEY.AYD2	19" 1U Manual LED Lighting Module	483	26,5	44,5	0,25



GROUND CONNECTION KIT

Order Code	Description	Weight (kg)
ZEY.AKS7	Ground Connection Kit	0,35


CABIN ASSEMBLY SET

Order Code	Description	Weight (kg)
ZEY.AKS9	Cabin Assembly Set	0,35


BASE MODULES

Ürün Kodu	Description	Dimensions (mm)	Weight (kg)
ZEY.B66	Plinth Elevator Module h:100 mm	600x600	4,20
ZEY.B68	Plinth Elevator Module h:100 mm	600x800	5,00
ZEY.B88	Plinth Elevator Module h:100 mm	800x800	5,60
ZEY.B610	Plinth Elevator Module h:100 mm	600x1000	5,60
ZEY.B810	Plinth Elevator Module h:100 mm	800x1000	6,30
ZEY.B612	Plinth Elevator Module h:100 mm	600x1200	6,30
ZEY.B812	Plinth Elevator Module h:100 mm	800x1200	7,30



FRONT PERFORATED COVERS

Order Code	Description
ZEY.12U60PFRON	12U Front Perforated Covers Width:600 mm
ZEY.16U60PFRON	16U Front Perforated Covers Width:600 mm
ZEY.20U60PFRON	20U Front Perforated Covers Width:600 mm
ZEY.22U60PFRON	22U Front Perforated Covers Width:600 mm
ZEY.26U60PFRON	26U Front Perforated Covers Width:600 mm
ZEY.32U60PFRON	32U Front Perforated Covers Width:600 mm
ZEY.36U60PFRON	36U Front Perforated Covers Width:600 mm
ZEY.42U60PFRON	42U Front Perforated Covers Width:600 mm
ZEY.44U60PFRON	44U Front Perforated Covers Width:600 mm
ZEY.47U60PFRON	47U Front Perforated Covers Width:600 mm
ZEY.26U80PFRON	26U Front Perforated Covers Width:800 mm
ZEY.32U80PFRON	32U Front Perforated Covers Width:800 mm
ZEY.36U80PFRON	36U Front Perforated Covers Width:800 mm
ZEY.42U80PFRON	42U Front Perforated Covers Width:800 mm
ZEY.44U80PFRON	44U Front Perforated Covers Width:800 mm
ZEY.47U80PFRON	47U Front Perforated Covers Width:800 mm



BACK PERFORATED COVERS

Order Code	Description
ZEY.12U60PFRARKA	12U Back Perforated Covers Width:600 mm
ZEY.16U60PFRARKA	16U Back Perforated Covers Width:600 mm
ZEY.20U60PFRARKA	20U Back Perforated Covers Width:600 mm
ZEY.22U60PFRARKA	22U Back Perforated Covers Width:600 mm
ZEY.26U60PFRARKA	26U Back Perforated Covers Width:600 mm
ZEY.32U60PFRARKA	32U Back Perforated Covers Width:600 mm
ZEY.36U60PFRARKA	36U Back Perforated Covers Width:600 mm
ZEY.42U60PFRARKA	42U Back Perforated Covers Width:600 mm
ZEY.44U60PFRARKA	44U Back Perforated Covers Width:600 mm
ZEY.47U60PFRARKA	47U Back Perforated Covers Width:600 mm
ZEY.26U80PFRARKA	26U Back Perforated Covers Width:800 mm
ZEY.32U80PFRARKA	32U Back Perforated Covers Width:800 mm
ZEY.36U80PFRARKA	36U Back Perforated Covers Width:800 mm
ZEY.42U80PFRARKA	42U Back Perforated Covers Width:800 mm
ZEY.44U80PFRARKA	44U Back Perforated Covers Width:800 mm
ZEY.47U80PFRARKA	47U Back Perforated Covers Width:800 mm

